



Comber Grove Primary School

'Small School. Big Heart!'

1-3 Comber Grove, London, SE5 0LQ

Email: office@combergrove.southwark.sch.uk

Website: www.combergrove.co.uk

Telephone: 020 7703 4168

Twitter: @ComberGrove

Headteacher: Mr Loram Black

Deputy Headteacher: Ms Joanne Fielding

Wednesday, 19th October 2022

Dear Comber Grove families,

ACTIONS SPEAK LOUDER THAN WORDS!

The past few weeks certainly have not been without their challenges! However, in true Comber Grove fashion, we are always keen to take on new as well as familiar challenges!

Some of our children have needed more support emotionally because it has been a difficult time for them settling back into school routines. Please be assured that we will continue to support them. A copy of the updated **Positive Behaviour and Anti-Bullying Policy** and DfE agreed policy on **Suspension and Permanent Exclusion Policy** will be emailed to all parents.

Staff Deployment

As you may or may not be aware, due to a falling roll within our school, as with many other schools in Southwark, we have had no other choice but to

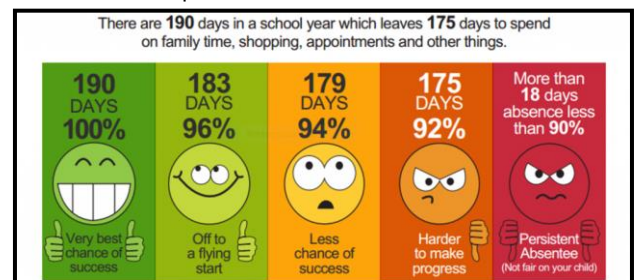


re-organise some of our classes, with some being organised into vertical classes. Vertical classes are not uncommon and are formed in most schools partly because of the way in which the pupil roll is configured in any given year (i.e. the numbers of pupils in each different year group) and this situation can change from year to year as the size of year groups varies. We are really pleased that the staff at Comber Grove have

decided to stay with us and thank them for their continued support. Many of them have worked in the classroom with your children for a number of years and we thank them for their hard work and continued support

Attendance

Good attendance is essential for children to achieve their potential. The school will not penalise parents/carers when their children have been directed to self-isolate. However, children have faced a great deal of disruption over the past 2 academic years and to mitigate against further negative effects we ask parents to plan any future holidays with caution ensuring that these are not organised within term time.



Persistent Absence: Children are considered to be persistently absent if their attendance drops below 90%. We are directed by government to take action to improve attendance when this happens. If your child's attendance has fallen below 90%, the school will contact you to discuss the reasons why and how to improve attendance going forward. We will then work closely with you to monitor your child's attendance. Self-isolation periods and lockdown have been statistically removed when calculating these percentages currently.

Please note that, given the disruption to children's education caused by the pandemic, requests for leave during term time are unlikely to be authorised by the Head Teacher.



Community

Pride

Empathy

Happiness

Individuality

Creativity



Comber Grove Primary School

'Small School. Big Heart!'

1-3 Comber Grove, London, SE5 0LQ

Email: office@combergrove.southwark.sch.uk

Website: www.combergrove.co.uk

Telephone: 020 7703 4168

Twitter: @ComberGrove

Headteacher: Mr Lorrain Black

Deputy Headteacher: Ms Joanne Fielding

Family emergencies also need careful consideration. It is not always appropriate or in the best interests of the child to miss school for emergencies which are being dealt with by adult family members.

No school or local authority wants to take legal action. Every attempt to resolve parents' concerns and improve a child's attendance will be made before any formal legal action, which may include a penalty notice or court action, is considered.

After so much disruption to children's education over the past two years, the most important thing is that school and parents work together to get children back into school. The school is ready to listen so please contact us if you have any worries, and we will try to help you.

***Please don't let your child miss out on the education they deserve
Every school day counts ...***

Parent Coffee Mornings with Governors

Thank you to all of you who attended the coffee mornings with Staff and Parent Governors. It was lovely to meet with such a supportive group of parents/ carers who care about the future of Comber Grove Primary School. We have planned to continue to meet with you as these meetings are important forums for healthy dialogue.



Parent Survey

The school conducted a parent survey to gather information about how parents and carers perceive the school's performance. We are very grateful to all of you who completed the survey and we are taking actions where necessary. Thank you also for the positive feedback which we have received. A letter detailing planned actions following the Parent Survey has already been shared with you.



To develop good communication and further fully inform parents about what is happening in school we will:

- Ensure all school communication and key policies are "user friendly", useful and informative
- Aim to keep parents right up to date with news and events, via email and text messages using ScholarPack
- Provide regular communication between the home and the classroom through the school communication online platform, Class Dojo. In addition to relevant letters and communications, class teachers will also use this app to share photos of learning and lessons each week.
- Weekly Newsletters with lots of school news
- Send half termly school and curriculum newsletters containing information such as dates and events



Community

Pride

Empathy

Happiness

Individuality

Creativity



Comber Grove Primary School

'Small School. Big Heart!'

1-3 Comber Grove, London, SE5 0LQ

Email: office@combergrove.southwark.sch.uk

Website: www.combergrove.co.uk

Telephone: 020 7703 4168

Twitter: @ComberGrove

Headteacher: Mr Lorrain Black

Deputy Headteacher: Ms Joanne Fielding

- Keep parents up to date with school activities through the school's twitter account @ComberGrove
- Invite parents to a parent's days in both the Autumn and Spring Term
- Hold a parent's meeting in the Summer Term for parents and pupils to meet their new class teacher for the following year
- Ensure key information is regularly updated on the school website and the displays around the school
- Ensure the school website is updated and reflects the positive changes in the school.
<https://combergroveprimary.co.uk/>

To make good use of parents' expertise and willingness to enhance their own learning and that of their child and other children and to actively involve them in school life we will encourage parents to:

- Volunteer to support within classrooms and/or become parent governors.
- Regularly offer parent engagement days linked to the curriculum and school priorities
- Attend class and celebration assemblies
- Attend school performances, events and celebrations
- Become involved in school projects
- Participate in Family and Adult Learning events organised by school

Uniform

School uniform is an important aspect of who we are as a school community and we need your support in ensuring that your child/ children come to school dressed in full school uniform.

We have a full school uniform and PE kit at Comber Grove, which we expect all children to wear. Uniform, and PE Kits with the school's logo can be purchased directly from the school's supplier School Trends, orders can be placed by clicking the link below.

[Comber Grove Primary Uniform \(schooltrends.co.uk\)](http://ComberGrovePrimaryUniform(schooltrends.co.uk))

Correct uniform can also be purchased from your local supermarket.

Girls

Grey skirt, dress or trousers
Light blue shirt or polo shirt
Grey jumper or cardigan
Blue checked summer dress

Boys

Grey trousers
Light blue shirt or polo shirt
Grey jumper or cardigan

*All children should wear sensible black shoes. Trainers are acceptable if they are **all black**.



Mental Health
First Aider®
MHFA England

Community

Pride

Empathy

Happiness

Individuality

Creativity



Comber Grove Primary School

'Small School. Big Heart!'

1-3 Comber Grove, London, SE5 0LQ

Email: office@combergrove.southwark.sch.uk

Website: www.combergrove.co.uk

Telephone: 020 7703 4168

Twitter: [@ComberGrove](https://twitter.com/ComberGrove)

Headteacher: Mr Lorrám Black

Deputy Headteacher: Ms Joanne Fielding

PE Kit

White t-shirt (compulsory from September 2020)

PE hoodie for outdoor PE.

Navy blue or black shorts, leggings or tracksuit bottoms

Suitable trainers or plimsolls

Headscarf: Plain black (if worn). White headscarves may be worn in summer.

Please note: no boots with heels, sling backs or sandals are allowed due to Health and Safety in the playground.

Hair: Shoulder length or longer hair **must be tied up** with black, grey or blue ties

Nails: Should be kept clean and short enough to enable students to participate safely in practical activities. **No coloured nail varnish is allowed.**

Jewellery: Wrist watches may be worn if a child is able to tell the time. **We discourage pupils from wearing expensive smart watches to school!**

It is important that all items of clothing are clearly marked with your child's name, including coats and P.E. kits. This can be done with sew in tapes or with an indelible pen.

As always, we are grateful for your patience, feedback and thank you all for your continued support.

We hope you are able to take some time over the next week for some well-deserved rest and recovery.

Yours sincerely,

L. Black

Mr Lorrám Black

Interim Headteacher

19/07/2022



Community

Pride

Empathy

Happiness

Individuality

Creativity